

Scaled data based on original data using  
LM-79-08 Approved Method: Electrical and Photometric Measurements of Solid-  
State Lighting Products

Test Report Prepared for  
Cooper Lighting Solutions  
(formerly Eaton)

Brand: INVUE

Report Number: P149380

Luminaire Tested: **VWM-E04-LED-E1-SL2-HSS**

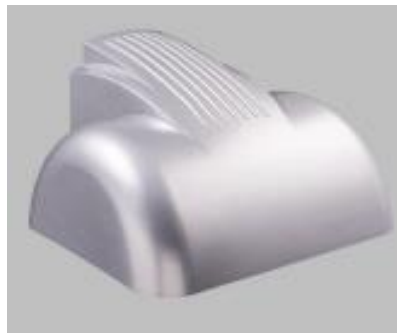
Issue Date: 03/03/2020

**Test Information**

Test Method: LM-79-08  
Report Number: P149380  
REPORT IS SCALED FROM IESNA LM-79-08 TEST DATA (P33726)  
Test Lab: INNOVATION CENTER-P3  
Issue Date: 03/03/2020  
Manufacturer: COOPER LIGHTING SOLUTIONS (FORMERLY EATON)  
Product Line: INVUE  
Catalog Number: VWM-E04-LED-E1-SL2-HSS  
Description: VISION WALL MEDIUM LED LUMINAIRE  
(4) LIGHTBARS WITH AccuLED OPTICS - TYPE 2 W/ SPILL LIGHT CONTROL AND HOUSE SIDE SHIELD  
Light Source: (84) 4000K CCT, 70 CRI LEDs  
Ballast/Driver: -

**Summary**

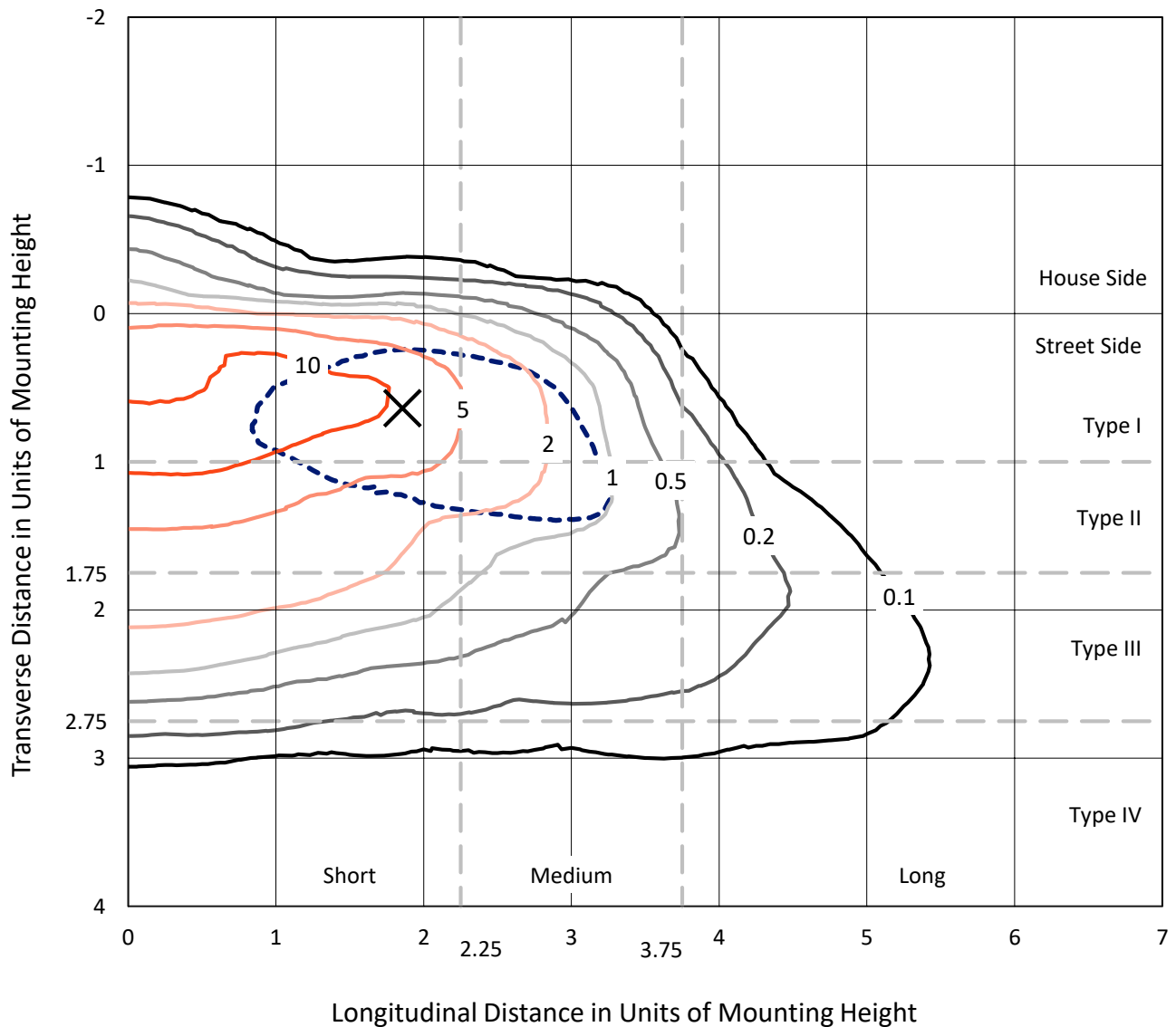
Lumens per Lamp: N/A  
Luminaire Lumens: 7334.3 lumens  
Efficiency: N/A  
Efficacy: 75.5 lumens/watt  
Luminous Opening: Rectangular (W 0.67' x L: 1' x H: 0')  
IES Classification: Type II - Short - Non-Cutoff  
BUG Rating: B0 - U0 - G2  
  
Input Watts (W): 97.2  
Input Voltage (V): NR  
Input Current (Ain): NR  
Voltage Rise (V): NR  
Power Factor: NR  
Total Harmonic Distortion (THDi): NR  
Frequency (hertz): 60  
Stabilization Time: NR  
Operation Time: NR  
Ambient Temperature (°C): NR  
Test Distance: 25 FT



REPORT NUMBER: P149380  
 CATALOG NUMBER: VWM-E04-LED-E1-SL2-HSS

### Iso-Footcandle Lines of Horizontal Illumination

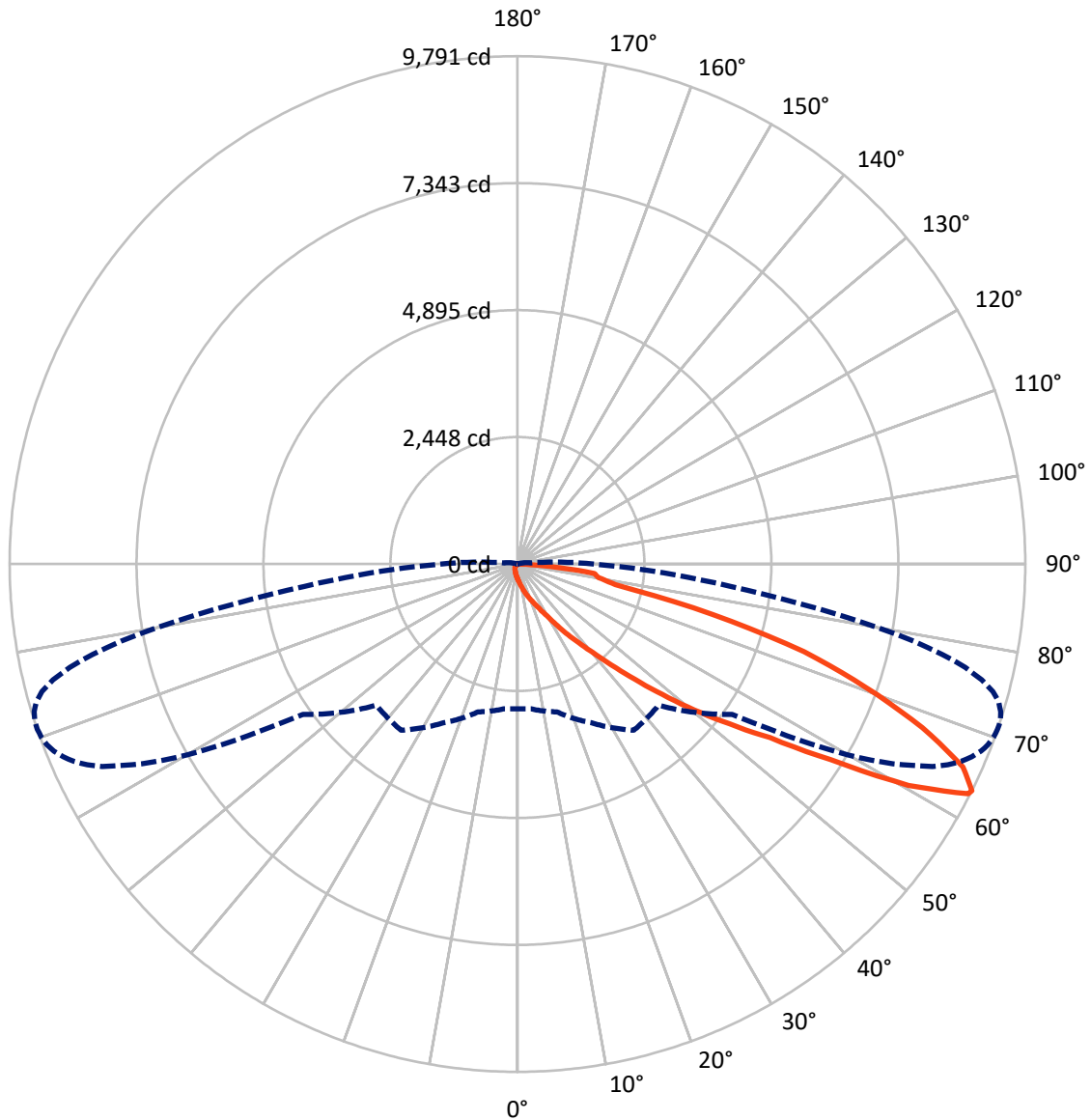
✕ Max cd  
 - - - 1/2 Max cd



Based on 10 foot mounting height. Maximum calculated value = 15.4 fc  
 Type II - Short - Non-Cutoff

REPORT NUMBER: P149380  
CATALOG NUMBER: VWM-E04-LED-E1-SL2-HSS

### Luminous Intensity Polar Plot



— Vertical Plane Through 71-Deg Lateral    - - - Horizontal Cone Through 63-Deg Vertical

REPORT NUMBER: P149380

CATALOG NUMBER: VWM-E04-LED-E1-SL2-HSS

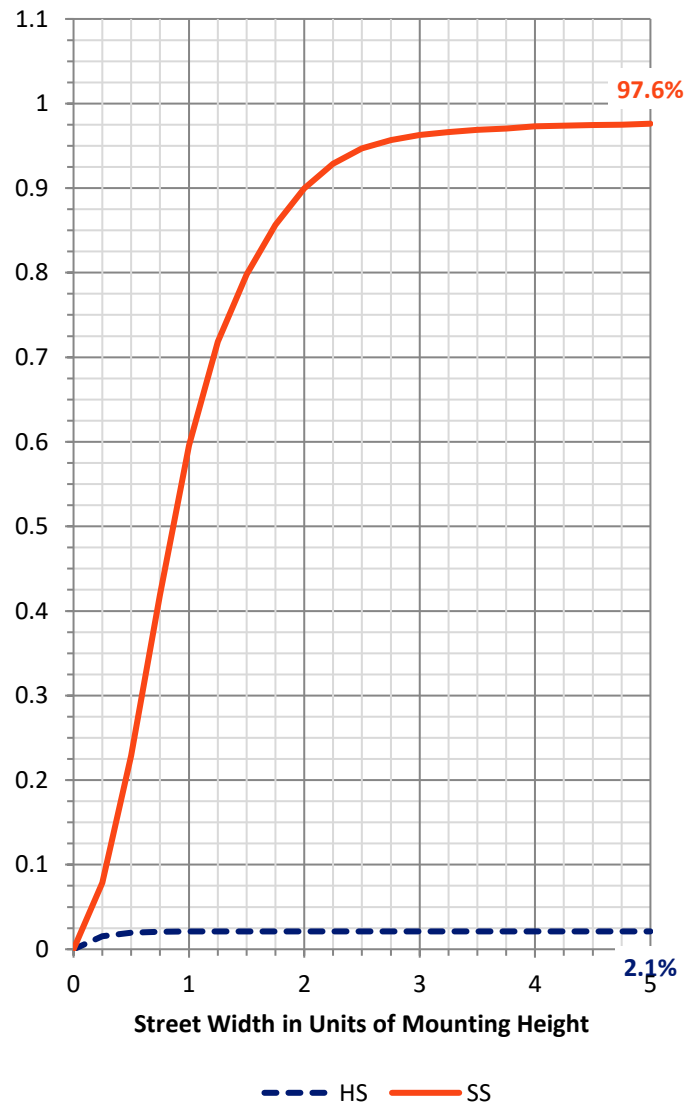
**FLUX DISTRIBUTION:**

		Downward	Upward	Total
<b>House Side</b>	Lumens	155.7	0.0	155.7
	% Fixture	2.1	0.0	2.1
<b>Street Side</b>	Lumens	7178.6	0.0	7178.6
	% Fixture	97.9	0.0	97.9
<b>Total</b>	Lumens	7334.3	0.0	7334.3
	% Fixture	100.0	0.0	100.0

**Coefficient of Utilization**

**ZONAL LUMENS:**

Zone	Lumens	% Fixture
0°-10°	31.1	0.4
10°-20°	120.6	1.6
20°-30°	244.9	3.3
30°-40°	598.5	8.2
40°-50°	1338.4	18.2
50°-60°	1881.9	25.7
60°-70°	2213.0	30.2
70°-80°	799.1	10.9
80°-90°	106.9	1.5
90°-100°	0.0	0.0
100°-110°	0.0	0.0
110°-120°	0.0	0.0
120°-130°	0.0	0.0
130°-140°	0.0	0.0
140°-150°	0.0	0.0
150°-160°	0.0	0.0
160°-170°	0.0	0.0
170°-180°	0.0	0.0
0°-90°	7334.3	100.0
0°-180°	7334.3	100.0



REPORT NUMBER: P149380

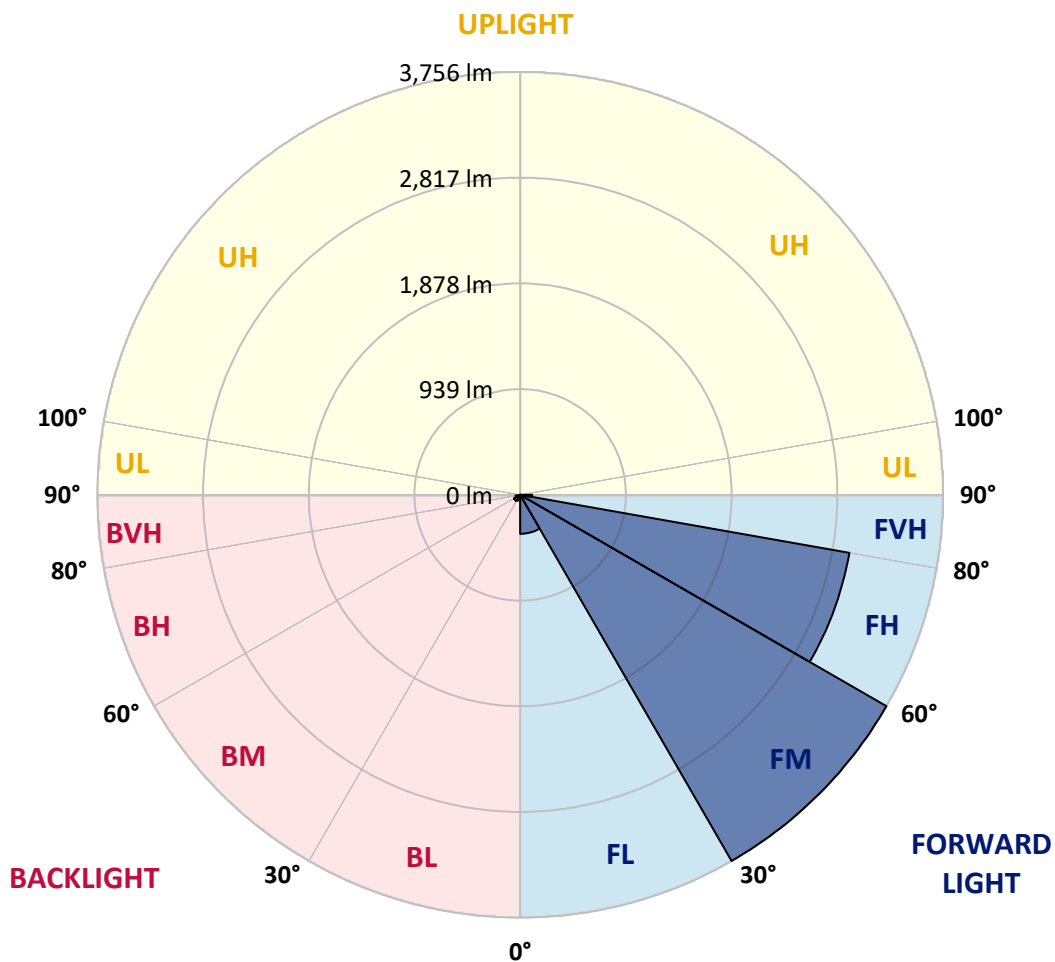
CATALOG NUMBER: VWM-E04-LED-E1-SL2-HSS

**LUMINAIRE CLASSIFICATION SYSTEM LUMEN TABLE AND BUG RATING:**

Zone	Lumens	% Fixture	Zone Rating/Lumen Limit		
			B	U	G
FL (0°-30°)	346.6	4.7			
FM (30°-60°)	3756.0	51.2			
FH (60°-80°)	2969.4	40.5			G2/5000
FVH (80°-90°)	106.6	1.5			G2/225
BL (0°-30°)	50.1	0.7	B0/110		
BM (30°-60°)	62.7	0.9	B0/220		
BH (60°-80°)	42.7	0.6	B0/110		G0/110
BVH (80°-90°)	0.2	0.0			G0/10
UL (90°-100°)	0.0	0.0		U0/0	
UH (100°-180°)	0.0	0.0		U0/0	

**BUG Rating: B0-U0-G2**

Type II Short





REPORT NUMBER: P149380

CATALOG NUMBER: VWM-E04-LED-E1-SL2-HSS

**CANDELA DISTRIBUTION (FULL):**

	0°	5°	15°	25°	35°	45°	55°	56°	57°	58°	59°
0°	281.3	281.3	281.3	281.3	281.3	281.3	281.3	281.3	281.3	281.3	281.3
2.5°	368.0	372.0	369.3	362.7	354.7	344.0	334.7	334.7	333.3	329.3	330.7
5°	482.7	484.0	478.7	462.7	448.0	425.3	400.0	397.3	394.7	390.7	389.3
7.5°	594.7	600.0	594.7	577.3	548.0	513.3	473.3	469.3	461.3	461.3	456.0
10°	709.3	709.3	704.0	684.0	657.3	608.0	557.3	550.7	541.3	538.7	530.7
12.5°	790.7	790.7	788.0	777.3	756.0	712.0	650.7	644.0	632.0	628.0	618.7
15°	822.7	822.7	824.0	833.3	834.7	814.7	750.7	745.3	733.3	722.7	718.7
17.5°	842.7	841.3	841.3	854.7	878.7	892.0	850.7	845.3	832.0	826.7	813.3
20°	886.7	884.0	876.0	876.0	898.7	945.3	945.3	944.0	929.3	925.3	918.7
22.5°	952.0	949.3	925.3	905.3	916.0	974.7	1029.3	1026.7	1021.3	1016.0	1012.0
25°	1058.7	1049.3	1008.0	949.3	940.0	1002.7	1093.3	1100.0	1104.0	1104.0	1106.7
27.5°	1220.0	1208.0	1134.7	1025.3	984.0	1048.0	1164.0	1177.3	1189.3	1192.0	1204.0
30°	1444.0	1422.7	1317.3	1157.3	1062.7	1114.7	1268.0	1282.7	1300.0	1305.3	1324.0
32.5°	1812.0	1800.0	1698.7	1458.7	1256.0	1245.3	1413.3	1432.0	1454.7	1464.0	1486.7
35°	2372.0	2374.7	2292.0	2076.0	1796.0	1649.3	1673.3	1689.3	1697.3	1725.3	1737.3
37.5°	2752.0	2758.7	2777.3	2692.0	2492.0	2342.7	2154.7	2172.0	2130.7	2134.7	2136.0
40°	2960.0	2981.3	3090.7	3173.3	3157.3	3070.7	2920.0	2929.3	2852.0	2834.7	2750.7
42.5°	3098.7	3126.7	3301.3	3557.3	3688.0	3766.7	3732.0	3728.0	3668.0	3645.3	3574.7
45°	3185.3	3210.7	3430.7	3808.0	4109.3	4338.7	4433.3	4444.0	4393.3	4370.7	4312.0
47.5°	3181.3	3210.7	3446.7	3901.3	4345.3	4712.0	4978.7	4992.0	5022.7	5002.7	5006.7
50°	3005.3	3033.3	3270.7	3742.7	4276.0	4882.7	5370.7	5413.3	5462.7	5496.0	5512.0
52.5°	2792.0	2812.0	3022.7	3470.7	3980.0	4812.0	5602.7	5676.0	5749.3	5812.0	5856.0
55°	2713.3	2736.0	2901.3	3273.3	3742.7	4516.0	5710.7	5818.7	5922.7	6025.3	6109.3
57.5°	2754.7	2776.0	2894.7	3180.0	3601.3	4204.0	5741.3	5909.3	6080.0	6246.7	6412.0
60°	2906.7	2929.3	3030.7	3266.7	3564.0	4024.0	5621.3	5900.0	6184.0	6474.7	6748.0
62.5°	2846.7	2856.0	3005.3	3418.7	3830.7	3870.7	5185.3	5574.7	6008.0	6456.0	6897.3
63°	2789.3	2800.0	2952.0	3377.3	3912.0	3848.0	5050.7	5461.3	5918.7	6401.3	6881.3
65°	2529.3	2530.7	2646.7	2982.7	3821.3	3888.0	4450.7	4842.7	5368.0	5946.7	6553.3
67.5°	1888.0	1878.7	1990.7	2246.7	3000.0	3889.3	3820.0	4040.0	4405.3	4918.7	5462.7
70°	669.3	654.7	836.0	1190.7	1869.3	3181.3	3282.7	3297.3	3398.7	3676.0	4017.3
72.5°	217.3	221.3	266.7	436.0	861.3	2141.3	2972.0	2926.7	2900.0	2898.7	2944.0
75°	86.7	88.0	106.7	193.3	386.7	1032.0	2602.7	2628.0	2637.3	2650.7	2665.3
77.5°	41.3	45.3	60.0	108.0	192.0	510.7	1862.7	2077.3	2200.0	2294.7	2352.0
80°	14.7	17.3	33.3	66.7	89.3	234.7	981.3	1184.0	1364.0	1596.0	1796.0
82.5°	0.0	0.0	6.7	46.7	49.3	94.7	402.7	472.0	540.0	700.0	898.7
85°	0.0	0.0	0.0	13.3	14.7	16.0	136.0	164.0	184.0	214.7	248.0
87.5°	0.0	0.0	0.0	0.0	0.0	0.0	1.3	4.0	8.0	20.0	30.7
90°	0.0	0.0	0.0	0.0	0.0	0.0	0.0	0.0	0.0	0.0	0.0



REPORT NUMBER: P149380

CATALOG NUMBER: VWM-E04-LED-E1-SL2-HSS

**CANDELA DISTRIBUTION (continued):**

	60°	61°	62°	64°	65°	66°	67°	68°	69°	70°	71°
0°	281.3	281.3	281.3	281.3	281.3	281.3	281.3	281.3	281.3	281.3	281.3
2.5°	328.0	326.7	326.7	324.0	322.7	320.0	318.7	314.7	313.3	313.3	313.3
5°	388.0	382.7	380.0	373.3	369.3	368.0	361.3	358.7	354.7	356.0	349.3
7.5°	454.7	445.3	441.3	432.0	429.3	420.0	417.3	410.7	406.7	398.7	396.0
10°	528.0	516.0	509.3	494.7	490.7	484.0	476.0	468.0	461.3	453.3	449.3
12.5°	612.0	601.3	596.0	576.0	566.7	557.3	546.7	536.0	525.3	518.7	509.3
15°	710.7	693.3	688.0	669.3	653.3	641.3	626.7	613.3	605.3	592.0	582.7
17.5°	808.0	790.7	786.7	758.7	741.3	733.3	717.3	700.0	685.3	672.0	657.3
20°	905.3	893.3	882.7	856.0	837.3	824.0	802.7	785.3	773.3	754.7	736.0
22.5°	1002.7	990.7	982.7	954.7	937.3	918.7	900.0	881.3	864.0	841.3	820.0
25°	1102.7	1094.7	1090.7	1065.3	1049.3	1032.0	1013.3	992.0	970.7	945.3	922.7
27.5°	1206.7	1209.3	1201.3	1196.0	1178.7	1166.7	1137.3	1122.7	1106.7	1076.0	1048.0
30°	1338.7	1346.7	1344.0	1348.0	1337.3	1329.3	1306.7	1288.0	1269.3	1240.0	1208.0
32.5°	1505.3	1516.0	1521.3	1536.0	1530.7	1528.0	1521.3	1494.7	1481.3	1430.7	1417.3
35°	1762.7	1757.3	1780.0	1792.0	1786.7	1784.0	1776.0	1761.3	1745.3	1709.3	1676.0
37.5°	2097.3	2102.7	2110.7	2086.7	2070.7	2069.3	2045.3	2030.7	2008.0	1968.0	1928.0
40°	2710.7	2677.3	2640.0	2538.7	2494.7	2469.3	2398.7	2378.7	2340.0	2285.3	2244.0
42.5°	3508.0	3474.7	3362.7	3193.3	3102.7	2977.3	2920.0	2849.3	2794.7	2705.3	2657.3
45°	4300.0	4204.0	4190.7	3993.3	3881.3	3716.0	3613.3	3494.7	3370.7	3253.3	3168.0
47.5°	4968.0	4946.7	4881.3	4761.3	4657.3	4518.7	4386.7	4204.0	4076.0	3909.3	3756.0
50°	5502.7	5501.3	5477.3	5408.0	5321.3	5209.3	5093.3	4938.7	4793.3	4589.3	4425.3
52.5°	5902.7	5924.0	5932.0	5910.7	5877.3	5778.7	5720.0	5590.7	5468.0	5294.7	5117.3
55°	6196.0	6274.7	6314.7	6360.0	6350.7	6316.0	6313.3	6229.3	6173.3	6036.0	5910.7
57.5°	6558.7	6688.0	6812.0	7032.0	7040.0	7117.3	7157.3	7197.3	7208.0	7153.3	7112.0
60°	7020.0	7284.0	7518.7	7978.7	8098.7	8288.0	8410.7	8544.0	8657.3	8666.7	8664.0
62.5°	7345.3	7752.0	8130.7	8813.3	9046.7	9265.3	9429.3	9558.7	9637.3	9717.3	9754.7
63°	7354.7	7800.0	8202.7	8906.7	9152.0	9360.0	9516.0	9636.0	9718.7	9766.7	9790.7
65°	7129.3	7669.3	8149.3	8850.7	9081.3	9290.7	9372.0	9450.7	9490.7	9509.3	9438.7
67.5°	6042.7	6570.7	7130.7	7914.7	8112.0	8362.7	8429.3	8469.3	8488.0	8484.0	8424.0
70°	4518.7	4961.3	5584.0	6480.0	6741.3	6986.7	7138.7	7204.0	7225.3	7218.7	7129.3
72.5°	3154.7	3414.7	3928.0	4925.3	5281.3	5596.0	5784.0	5881.3	5901.3	5861.3	5778.7
75°	2649.3	2662.7	2778.7	3324.0	3657.3	3993.3	4205.3	4266.7	4226.7	4105.3	3894.7
77.5°	2365.3	2394.7	2394.7	2476.0	2541.3	2634.7	2654.7	2505.3	2332.0	2108.0	1926.7
80°	1984.0	2086.7	2158.7	2218.7	2225.3	2206.7	2157.3	2073.3	1940.0	1769.3	1580.0
82.5°	1205.3	1408.0	1490.7	1800.0	1952.0	2054.7	2046.7	1934.7	1833.3	1656.0	1494.7
85°	304.0	328.0	356.0	462.7	518.7	633.3	705.3	738.7	750.7	689.3	624.0
87.5°	29.3	20.0	33.3	25.3	36.0	26.7	36.0	33.3	41.3	44.0	48.0
90°	0.0	0.0	0.0	0.0	0.0	0.0	0.0	0.0	0.0	0.0	0.0





REPORT NUMBER: P149380

CATALOG NUMBER: VWM-E04-LED-E1-SL2-HSS

**CANDELA DISTRIBUTION (continued):**

	72°	73°	74°	75°	76°	77°	78°	79°	80°	81°	82°
0°	281.3	281.3	281.3	281.3	281.3	281.3	281.3	281.3	281.3	281.3	281.3
2.5°	310.7	309.3	308.0	306.7	305.3	304.0	301.3	301.3	298.7	297.3	296.0
5°	345.3	342.7	341.3	338.7	334.7	332.0	328.0	322.7	318.7	317.3	314.7
7.5°	389.3	382.7	380.0	376.0	370.7	362.7	357.3	353.3	346.7	342.7	334.7
10°	438.7	432.0	424.0	416.0	408.0	398.7	392.0	386.7	376.0	370.7	361.3
12.5°	501.3	489.3	480.0	469.3	458.7	448.0	440.0	424.0	414.7	402.7	394.7
15°	565.3	554.7	544.0	530.7	514.7	497.3	489.3	474.7	462.7	444.0	433.3
17.5°	642.7	622.7	606.7	590.7	576.0	560.0	544.0	521.3	504.0	488.0	466.7
20°	718.7	694.7	677.3	656.0	634.7	609.3	590.7	574.7	550.7	529.3	506.7
22.5°	800.0	776.0	748.0	726.7	697.3	677.3	652.0	625.3	601.3	573.3	545.3
25°	898.7	873.3	841.3	813.3	780.0	752.0	721.3	690.7	661.3	629.3	593.3
27.5°	1020.0	993.3	958.7	925.3	881.3	846.7	817.3	776.0	738.7	698.7	657.3
30°	1173.3	1144.0	1101.3	1053.3	1009.3	970.7	929.3	874.7	833.3	785.3	732.0
32.5°	1373.3	1338.7	1281.3	1236.0	1181.3	1130.7	1073.3	1018.7	960.0	897.3	836.0
35°	1625.3	1593.3	1526.7	1460.0	1400.0	1340.0	1268.0	1205.3	1122.7	1046.7	968.0
37.5°	1886.7	1829.3	1768.0	1696.0	1621.3	1549.3	1461.3	1374.7	1280.0	1197.3	1098.7
40°	2185.3	2116.0	2065.3	1988.0	1882.7	1780.0	1698.7	1590.7	1472.0	1361.3	1245.3
42.5°	2594.7	2517.3	2426.7	2309.3	2233.3	2113.3	2008.0	1880.0	1724.0	1600.0	1460.0
45°	3068.0	2962.7	2874.7	2761.3	2669.3	2520.0	2397.3	2226.7	2070.7	1908.0	1737.3
47.5°	3608.0	3477.3	3349.3	3237.3	3090.7	2944.0	2788.0	2606.7	2406.7	2228.0	2025.3
50°	4228.0	4042.7	3865.3	3721.3	3520.0	3350.7	3181.3	2977.3	2756.0	2550.7	2320.0
52.5°	4917.3	4702.7	4468.0	4246.7	4013.3	3796.0	3592.0	3357.3	3110.7	2860.0	2602.7
55°	5749.3	5588.0	5312.0	5030.7	4718.7	4428.0	4165.3	3874.7	3574.7	3245.3	2974.7
57.5°	7052.0	6973.3	6742.7	6461.3	6054.7	5701.3	5256.0	4900.0	4465.3	4012.0	3662.7
60°	8817.3	8720.0	8590.7	8362.7	8040.0	7560.0	7069.3	6516.0	5854.7	5226.7	4630.7
62.5°	9758.7	9724.0	9618.7	9461.3	9160.0	8781.3	8286.7	7678.7	6932.0	6169.3	5409.3
63°	9786.7	9742.7	9652.0	9492.0	9226.7	8860.0	8374.7	7784.0	7053.3	6276.0	5500.0
65°	9408.0	9390.7	9298.7	9124.0	8942.7	8662.7	8286.7	7778.7	7165.3	6430.7	5658.7
67.5°	8344.0	8292.0	8150.7	8097.3	7970.7	7776.0	7489.3	7140.0	6701.3	6124.0	5457.3
70°	7057.3	6980.0	6802.7	6708.0	6553.3	6430.7	6256.0	6006.7	5736.0	5333.3	4836.0
72.5°	5693.3	5533.3	5370.7	5124.0	4908.0	4689.3	4496.0	4320.0	4022.7	3860.0	3482.7
75°	3697.3	3406.7	3128.0	2754.7	2418.7	2121.3	1832.0	1685.3	1380.0	1256.0	1078.7
77.5°	1754.7	1592.0	1373.3	1204.0	988.0	806.7	658.7	494.7	388.0	304.0	232.0
80°	1416.0	1278.7	1146.7	993.3	830.7	662.7	508.0	380.0	269.3	186.7	132.0
82.5°	1262.7	1113.3	950.7	845.3	734.7	601.3	493.3	402.7	297.3	217.3	148.0
85°	490.7	413.3	318.7	260.0	202.7	166.7	150.7	104.0	81.3	64.0	49.3
87.5°	42.7	34.7	28.0	18.7	20.0	10.7	12.0	8.0	6.7	6.7	5.3
90°	0.0	0.0	0.0	0.0	0.0	0.0	0.0	0.0	0.0	0.0	0.0



REPORT NUMBER: P149380

CATALOG NUMBER: VWM-E04-LED-E1-SL2-HSS

**CANDELA DISTRIBUTION (continued):**

	83°	84°	85°	86°	87°	88°	89°	90°	95°	105°	115°
0°	281.3	281.3	281.3	281.3	281.3	281.3	281.3	281.3	281.3	281.3	281.3
2.5°	294.7	293.3	292.0	289.3	289.3	286.7	285.3	284.0	277.3	262.7	250.7
5°	309.3	306.7	304.0	300.0	297.3	293.3	290.7	286.7	272.0	244.0	220.0
7.5°	330.7	325.3	321.3	313.3	309.3	304.0	300.0	293.3	269.3	226.7	193.3
10°	356.0	346.7	340.0	330.7	322.7	316.0	309.3	300.0	266.7	208.0	169.3
12.5°	386.7	376.0	362.7	352.0	341.3	332.0	322.7	310.7	262.7	192.0	150.7
15°	417.3	401.3	392.0	377.3	362.7	349.3	336.0	325.3	264.0	174.7	134.7
17.5°	452.0	436.0	416.0	400.0	384.0	366.7	350.7	329.3	257.3	161.3	122.7
20°	485.3	462.7	444.0	424.0	401.3	380.0	360.0	341.3	252.0	148.0	112.0
22.5°	521.3	494.7	470.7	445.3	417.3	393.3	369.3	345.3	242.7	136.0	102.7
25°	565.3	534.7	500.0	469.3	440.0	410.7	380.0	350.7	233.3	125.3	96.0
27.5°	618.7	578.7	544.0	505.3	464.0	426.7	393.3	361.3	224.0	117.3	89.3
30°	686.7	640.0	590.7	541.3	497.3	454.7	408.0	368.0	214.7	109.3	82.7
32.5°	777.3	718.7	658.7	601.3	542.7	488.0	438.7	386.7	209.3	102.7	76.0
35°	897.3	821.3	748.0	676.0	605.3	538.7	474.7	416.0	209.3	94.7	68.0
37.5°	1010.7	922.7	829.3	740.0	656.0	578.7	502.7	432.0	198.7	88.0	61.3
40°	1133.3	1028.0	918.7	813.3	712.0	616.0	529.3	448.0	189.3	80.0	54.7
42.5°	1321.3	1188.0	1045.3	922.7	801.3	682.7	574.7	478.7	177.3	72.0	48.0
45°	1568.0	1398.7	1230.7	1081.3	926.7	781.3	653.3	534.7	174.7	65.3	41.3
47.5°	1832.0	1632.0	1434.7	1244.0	1062.7	893.3	740.0	597.3	174.7	58.7	36.0
50°	2094.7	1844.0	1633.3	1412.0	1208.0	1008.0	825.3	662.7	176.0	53.3	29.3
52.5°	2332.0	2064.0	1828.0	1572.0	1346.7	1114.7	916.0	726.7	173.3	46.7	24.0
55°	2661.3	2346.7	2073.3	1790.7	1526.7	1265.3	1040.0	822.7	174.7	41.3	20.0
57.5°	3268.0	2898.7	2569.3	2198.7	1894.7	1557.3	1284.0	1020.0	190.7	34.7	14.7
60°	4138.7	3658.7	3196.0	2744.0	2357.3	1956.0	1601.3	1290.7	224.0	28.0	10.7
62.5°	4724.0	4096.0	3544.0	3045.3	2596.0	2176.0	1789.3	1436.0	246.7	22.7	6.7
63°	4784.0	4134.7	3580.0	3065.3	2606.7	2186.7	1797.3	1446.7	248.0	21.3	6.7
65°	4897.3	4201.3	3600.0	3069.3	2596.0	2172.0	1792.0	1445.3	250.7	17.3	5.3
67.5°	4768.0	4098.7	3484.0	2954.7	2502.7	2085.3	1725.3	1392.0	249.3	12.0	4.0
70°	4264.0	3709.3	3169.3	2676.0	2265.3	1888.0	1570.7	1269.3	229.3	8.0	2.7
72.5°	3130.7	2753.3	2334.7	1978.7	1706.7	1417.3	1209.3	953.3	177.3	5.3	1.3
75°	928.0	845.3	710.7	626.7	553.3	457.3	406.7	317.3	90.7	2.7	0.0
77.5°	185.3	168.0	150.7	137.3	129.3	110.7	105.3	86.7	37.3	1.3	0.0
80°	97.3	80.0	68.0	60.0	52.0	42.7	36.0	29.3	6.7	0.0	0.0
82.5°	93.3	62.7	45.3	37.3	32.0	25.3	20.0	14.7	4.0	0.0	0.0
85°	34.7	26.7	20.0	16.0	13.3	12.0	9.3	8.0	0.0	0.0	0.0
87.5°	5.3	4.0	4.0	2.7	2.7	1.3	1.3	1.3	0.0	0.0	0.0
90°	0.0	0.0	0.0	0.0	0.0	0.0	0.0	0.0	0.0	0.0	0.0



REPORT NUMBER: P149380

CATALOG NUMBER: VWM-E04-LED-E1-SL2-HSS

**CANDELA DISTRIBUTION (continued):**

	125°	135°	145°	155°	165°	175°	180°
0°	281.3	281.3	281.3	281.3	281.3	281.3	281.3
2.5°	238.7	228.0	222.7	216.0	216.0	214.7	217.3
5°	198.7	184.0	173.3	165.3	166.7	162.7	164.0
7.5°	168.0	153.3	144.0	138.7	137.3	136.0	136.0
10°	145.3	132.0	124.0	120.0	118.7	118.7	118.7
12.5°	129.3	116.0	109.3	106.7	106.7	105.3	105.3
15°	116.0	105.3	98.7	96.0	96.0	94.7	96.0
17.5°	105.3	94.7	89.3	86.7	86.7	85.3	85.3
20°	96.0	86.7	81.3	77.3	77.3	76.0	77.3
22.5°	88.0	78.7	72.0	69.3	68.0	66.7	68.0
25°	80.0	70.7	64.0	60.0	58.7	58.7	57.3
27.5°	73.3	64.0	56.0	52.0	50.7	50.7	49.3
30°	66.7	56.0	48.0	44.0	42.7	42.7	42.7
32.5°	60.0	48.0	41.3	37.3	36.0	36.0	36.0
35°	53.3	41.3	34.7	30.7	29.3	29.3	29.3
37.5°	45.3	34.7	26.7	24.0	22.7	21.3	21.3
40°	38.7	26.7	20.0	17.3	14.7	14.7	14.7
42.5°	32.0	21.3	14.7	10.7	9.3	8.0	9.3
45°	26.7	16.0	9.3	5.3	4.0	4.0	4.0
47.5°	21.3	10.7	4.0	1.3	1.3	1.3	1.3
50°	16.0	6.7	1.3	0.0	0.0	1.3	1.3
52.5°	12.0	4.0	0.0	0.0	0.0	0.0	0.0
55°	6.7	1.3	0.0	0.0	0.0	0.0	0.0
57.5°	4.0	0.0	0.0	0.0	0.0	0.0	0.0
60°	2.7	0.0	0.0	0.0	0.0	0.0	0.0
62.5°	1.3	0.0	0.0	0.0	0.0	0.0	0.0
63°	1.3	0.0	0.0	0.0	0.0	0.0	0.0
65°	1.3	0.0	0.0	0.0	0.0	0.0	0.0
67.5°	0.0	0.0	0.0	0.0	0.0	0.0	0.0
70°	0.0	0.0	0.0	0.0	0.0	0.0	0.0
72.5°	0.0	0.0	0.0	0.0	0.0	0.0	0.0
75°	0.0	0.0	0.0	0.0	0.0	0.0	0.0
77.5°	0.0	0.0	0.0	0.0	0.0	0.0	0.0
80°	0.0	0.0	0.0	0.0	0.0	0.0	0.0
82.5°	0.0	0.0	0.0	0.0	0.0	0.0	0.0
85°	0.0	0.0	0.0	0.0	0.0	0.0	0.0
87.5°	0.0	0.0	0.0	0.0	0.0	0.0	0.0
90°	0.0	0.0	0.0	0.0	0.0	0.0	0.0

(END OF REPORT)